



IBT "Reconditioned" Shot Blast Machine

IBT Serial Number: IBT- 6RT-005

**Wheelabrator (6) Cubic Foot Rubber Belt
Tumblast Machine, "Foundry Duty"**

Price (US Funds) \$ 35,000.00

This machine is reconditioned as required and includes an IBT Standard One (1) Year Warranty

Machine Description:

- "New" Multi-Ply Rubber Mill Belt, c/w extra support rolls. (650 pound load capacity).
- Mill Drive, 1 ½ hp. direct drive gear motor and reducer assembly.
- Adjustable take-ups for tensioning of the mill conveyor.
- Blast wheel, 15hp. 13" diameter, 3600 RPM, direct driven, (8) bladed. Bi-directional design for clockwise and counter clock wise rotation.
- 2 ½" wide blade sets mounted to a double sided bare wheel. Blades are of cast premium alloy.
- Control Cage and Impeller are of cast premium alloy.
- One (1) pneumatically operated abrasive control valve, feed hose assembly and abrasive slide/shut off gate for maintenance.
- Mild Steel Blast Cabinet and Feed Hopper, trash screen and access door.
- HD Steel Roof Plate, Barrel Head Plates and Barrel Head Seals.
- One piece pneumatic loading door with pneumatic operated locking pins to secure loading door in open or closed position.
- One (1) Lower Screw Auger slave driven off of elevator boot pulley.
- One (1) HD Elevator Assembly with multi-ply elevator belt assembly, cast steel buckets, and 1 ½ hp. direct drive gear motor.
- One (1) single lip Air Wash Style Separator, 20", and fines chute and dribble valve.
- One (1) Upper Screw Auger and Rotary Screen.
- Interlocked abrasive control with the door locks.
- One (1) Electrical Control Panel with e-stop, ammeter, and blast cycle timer.
- ESA inspection of control panel and field wiring.
- One (1) lot of electrical pre-wiring to all motors and solenoids.
- **460V/3 Ph., 60 Hz. electrics, 120V control voltage.**
Note: If a different power voltage is needed, a power transformer may be required.
- One (1) lot of pneumatic piping complete.
- One (1) Integral Cartridge Dust Collector with 5hp. The dust collector is attached to back of machine.
- Includes After/Secondary Filter to exhaust the air back into the plant.
- Present Hour Meter Reading (Abrasive On) - **2577 hrs.**

Notes:

- **Freight, Installation, Commissioning & Start-up: Can be provided at extra cost. Not included in above pricing.**
- **Machine is presently in our Peen & Clean Facility in Hamilton, Ontario.**

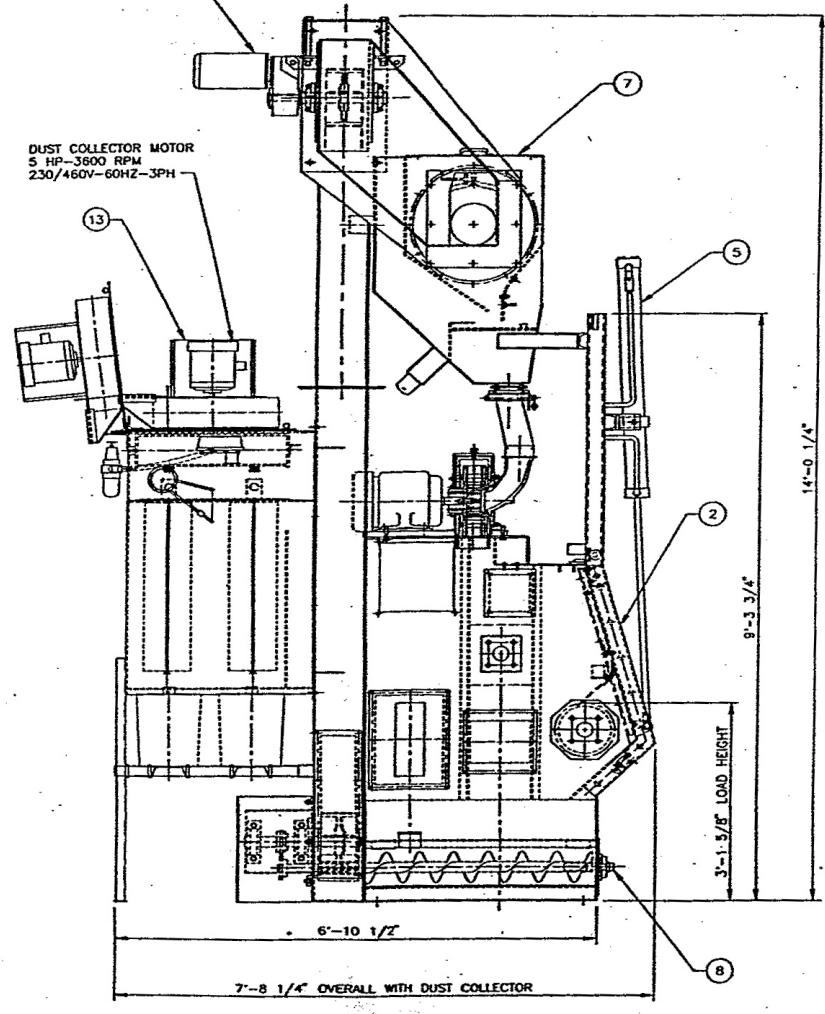
Safety features:

- Interlocking loading door limit switch preventing the blast wheel from starting.
- Wheel motor will not start unless work door is closed.
- Pneumatic Door Lock.



1 1/2 HP ELEVATOR DRIVE
1750 RPM INPUT
51 RPM OUTPUT
230/460V-60HZ-3 PH

DUST COLLECTOR MOTOR
5 HP-3600 RPM
230/460V-60HZ-3PH



Blast Wheel	Qty (1)	15.0 hp.
Mill Conveyor	Qty (1)	1.5 hp.
Elevator	Qty (1)	1.5 hp.
Upper Auger & Rotary Screen	Qty (1)	1.5 hp.
Dust Collector Fan	Qty (1)	5.0 hp.
Total hp.		24.5 hp.