



IBT "Reconditioned" Shot Blast Machine

IBT Serial Number: IBT-12MR- 002

BCP (12) Wheel Monorail System

Price (US Funds) without the overhead, Mono-Tractor Conveyor... \$ 340,000.00

Price (US Funds) with the overhead, Mono-Tractor Conveyor..... \$ 390,000.00

This machine is reconditioned as required and includes an IBT Standard One (1) Year Warranty

Machine Description:

- Single Pass Cleaning Envelope of **(6'- 6" wide x 8'- 4" high)**.
- Overhead Monorail System available. **(Mono-Tractor Style)**.
- **Qty. (12), 25 hp.** Direct Drive, Blast Wheel Assemblies.
- Qty. (12) Abrasive Feed Valves, gates, steel feed pipes, solenoids and controls.
- Blast Cabinet manufactured with **"Manganese Steel & Cast "Liners in Line"**.
- Entrance & Exit Vestibules with Lexan Finger Seal Assemblies.
- Qty. (2) HD Elevator Assemblies.
- Qty. (2) 30" Twin Separator Assemblies.
- Qty. (2) HD Reclaim Auger Assemblies and Drives.
- Complete Roof Slot Assembly with Steel & Rubber Seals.
- Service Platforms & Ladders.
- Blow-Off/Touch-up Booth, **12' wide x 20' long**, c/w extended Reclaim Augers.
- Entrance Spill Hopper, 15' long.
- Free Standing IBT Control Panel. **(575V, 3Ph, 60Hz.)**
- **AB, Allen-Bradley PLC Controls**, with Panelview.
- Machine Manufactured & Installed in **1997**.

Notes:

- **Dust Collector, Ducting & DC Options can be provided at extra cost. (10,000 CFM Req.)**.
- **Freight, Installation, Commissioning & Start-up: Can be provided at extra cost. Not included in above pricing.**
- **Machine is presently in our Peen & Clean Facility in Hamilton, Ontario.**



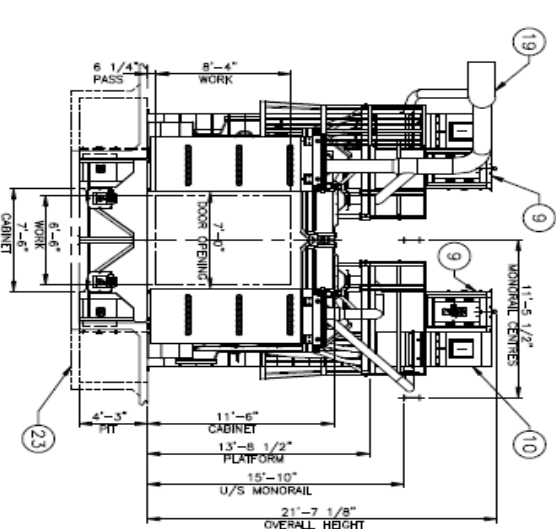
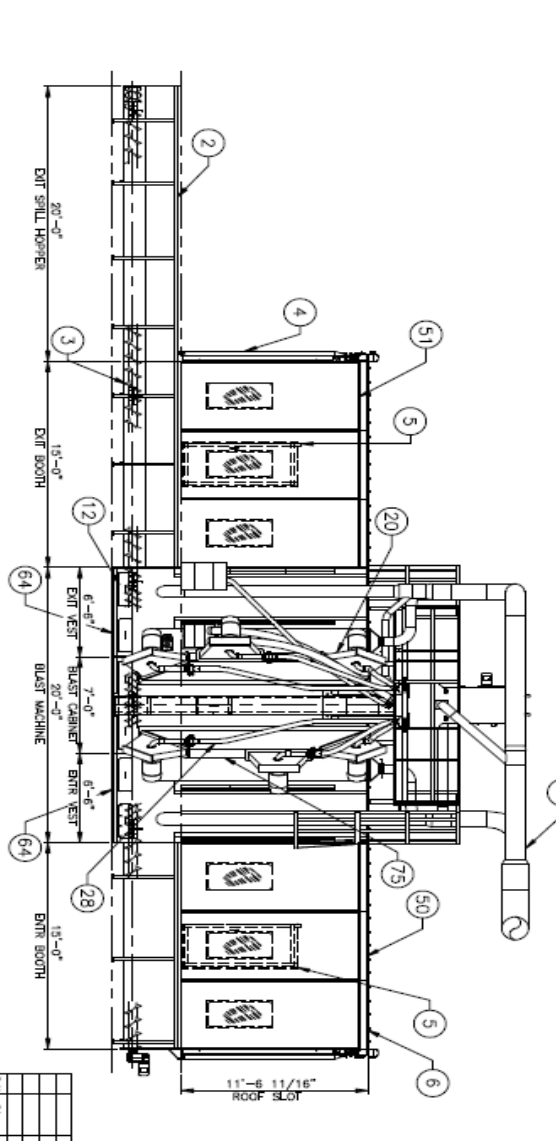
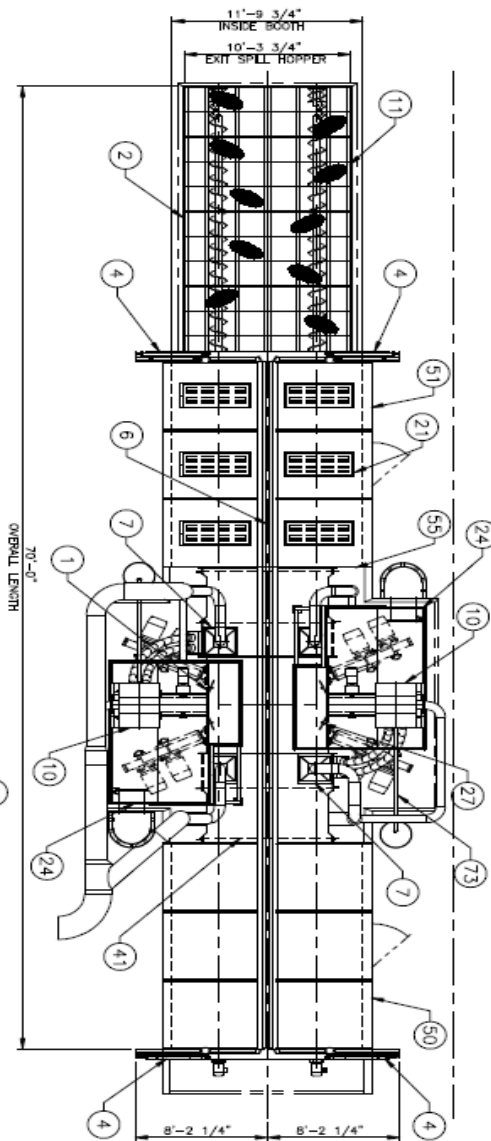


0
 1839
 11-41-11

- 29 1 MATRIQUE DE CHAMBRE
- 41 1 ASSET DES SERRAIS DU VENTRILE
- 50 1 CABINET DE RETOUCHAGE D'ENTREE
- 51 1 CABINET DE RETOUCHAGE DE SORTIE
- 55 2 ASS. DU MUR ASSEMB. DU PNEU/RETOUCH
- 64 2 ASSIPLAGE DU VENTRILE
- 65 1 SERRAIS SING-MANUVERE
- 73 1 ASSET BOUVIS DE REURT & DEROULEMENT
- 73 4 ASSIPLAGE DE LA COURSE A ROUE
- 83 1 DESSENS D'INSTALLATION
- 83 1 SERRAIS ELECTRIQUE

- 11 1 ASSET DE BRILLAGE A BAR
- 12 1 COUVERTS D'ISOLATION
- 15 1 LITRE DES MOTORS
- 19 1 SERRAIS DES CONDUITS D'AIR
- 20 12 ASSIPLAGE DES ROUES DE PROTECTION
- 21 1 ASSET DECLAIRAGE
- 23 1 TRACÉ DE FONDATION
- 24 1 ASSIPLAGE DES PATE-FRANSES
- 27 1 ASSIPLAGE DU BARRAGE DU LISE
- 28 1 ASSIPLAGE DES SERRAIS D'ALIMENTATION

- 1 2 CABINET DE DERAILLEUSE
- 2 1 TRENDS DES CONDUCTEURS A VIS
- 3 1 CONDUCTEURS A VIS
- 4 2 ROULETS GLISSANT
- 5 2 ASSET PNEU COLONNER
- 6 1 SERRAIS DE LA FENTE DU TOIT
- 7 4 BIENS D'AIR
- 8 1 SERRAIS DE CHANGEMENT (PAR LE CLIENT)
- 9 2 ASSIPLAGE DEBOUTILLAGE
- 10 2 ASS. DE SERRAIS SURBAU 30"



| REV | DATE | DESCRIPTION | BY | CHKD |
|-----|------|-------------|----|------|
| 0 | | | | |
| 1 | | | | |
| 2 | | | | |
| 3 | | | | |
| 4 | | | | |
| 5 | | | | |
| 6 | | | | |
| 7 | | | | |
| 8 | | | | |
| 9 | | | | |
| 10 | | | | |
| 11 | | | | |
| 12 | | | | |
| 13 | | | | |
| 14 | | | | |
| 15 | | | | |
| 16 | | | | |
| 17 | | | | |
| 18 | | | | |
| 19 | | | | |
| 20 | | | | |
| 21 | | | | |
| 22 | | | | |
| 23 | | | | |
| 24 | | | | |
| 25 | | | | |
| 26 | | | | |
| 27 | | | | |
| 28 | | | | |
| 29 | | | | |
| 30 | | | | |
| 31 | | | | |
| 32 | | | | |
| 33 | | | | |
| 34 | | | | |
| 35 | | | | |
| 36 | | | | |
| 37 | | | | |
| 38 | | | | |
| 39 | | | | |
| 40 | | | | |
| 41 | | | | |
| 42 | | | | |
| 43 | | | | |
| 44 | | | | |
| 45 | | | | |
| 46 | | | | |
| 47 | | | | |
| 48 | | | | |
| 49 | | | | |
| 50 | | | | |
| 51 | | | | |
| 52 | | | | |
| 53 | | | | |
| 54 | | | | |
| 55 | | | | |
| 56 | | | | |
| 57 | | | | |
| 58 | | | | |
| 59 | | | | |
| 60 | | | | |
| 61 | | | | |
| 62 | | | | |
| 63 | | | | |
| 64 | | | | |
| 65 | | | | |
| 66 | | | | |
| 67 | | | | |
| 68 | | | | |
| 69 | | | | |
| 70 | | | | |
| 71 | | | | |
| 72 | | | | |
| 73 | | | | |
| 74 | | | | |
| 75 | | | | |
| 76 | | | | |
| 77 | | | | |
| 78 | | | | |
| 79 | | | | |
| 80 | | | | |
| 81 | | | | |
| 82 | | | | |
| 83 | | | | |
| 84 | | | | |
| 85 | | | | |
| 86 | | | | |
| 87 | | | | |
| 88 | | | | |
| 89 | | | | |
| 90 | | | | |
| 91 | | | | |
| 92 | | | | |
| 93 | | | | |
| 94 | | | | |
| 95 | | | | |
| 96 | | | | |
| 97 | | | | |
| 98 | | | | |
| 99 | | | | |
| 100 | | | | |

BLP BLAST CLEANING PRODUCTS LTD.
 12 WHEEL STRUCTURAL MONORAIL MACHINE

DATE: 11-18-11
 DRAWN: H. K. KENNEDY
 CHECKED: J. W. KENNEDY
 APPROVED: A1-41839

THIS DRAWING AND THE DESIGN SHOWN HEREIN IS THE PROPERTY OF BLAST CLEANING PRODUCTS LTD. AND USE ON OTHER MACHINES WITHOUT WRITTEN CONSENT.