



IBT "Reconditioned" Shot Blast Machine

IBT Serial Number: IBT-6PS-007

Wheelabrator (4) Wheel (6') Plate and (36") Structural Roll Conveyor Machine

Price (US Funds) \$ 250,000.00

This machine is reconditioned as required and includes an IBT Standard One (1) Year Warranty

Machine Description:

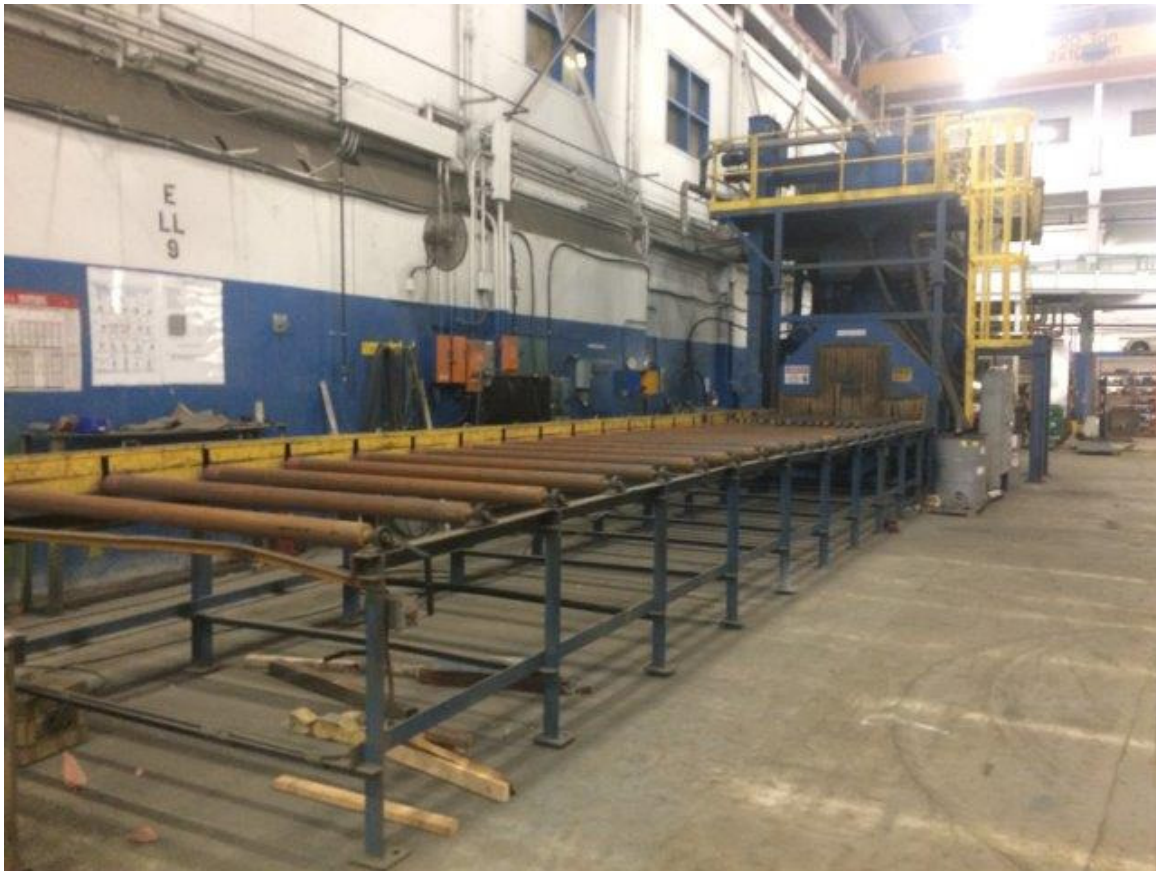
- **Single Pass Cleaning Envelope:** 72" Wide Plate x 36" High x 18" Wide Structural.
- **Blast Wheels:** Qty. (4), 15" Diameter, 20hp. Direct Drive Blast Wheel Assemblies complete with Abrasive Feed Valves, Feed Hoses and shut-off Slide Gates.
- **Conveyors:** Variable Speed, 40' of Entrance & 36' of Exit Roll Conveyor. Conveyors include 24" Roll Spacing & 45" Pass Height, 10' Spill Hopper & Auger in exit conveyor.
- **Blast Cabinet:** Manufactured with Manganese Steel & "Liners in Line", (3) Sets each of Entrance & Exit Vestibule Seal Assemblies.
- **Reclaim System:** Qty. (1) HD Elevator Assembly, 30" Separator Assembly c/w Upper Auger & Rotary Screen ass'y, 12" Longitudinal Auger and Cross Auger Assemblies. All Reclaim Drives are direct drives, no chains, guards etc.
- **"0" Speed Switches:** All Reclaim Components (Elevator, Separator, & Auger Drives) include "0" Speed Safety Switches.
- **Upper Service Platform & Ladder:** Includes a full Upper Service Platform for access to service all upper reclaim components.
- **Automatic Blow-Off:** Includes an Auto Blow-Off Assembly to assist with removal of abrasive from product prior to leaving the machine, c/w Blower Ass'y, Air Cannons, Hoses and blow-Off Chamber.

- **Ventilation System:** Includes a Machine Mounted, 7,000 CFM (20) Cartridge Dust Collector, c/w 15hp Fan Ass'y, Secondary/After Filter Ass'y to return the exhaust air back into the facility, Structural Support Ass'y over the exist conveyor. Access to the cartridges and after filters is from the upper service platform. Includes (1) Lot of Spiral Ducting and Slide Gates as designed installed.
- **Control Panel, (575V, 3Ph, 60Hz.):** Free Standing, PLC Control Logic.
Note: If 460V is required, a power transformer will be required. Machine totals 125hp.
- **Machine Manufactured & Installed in 2005**
- **Total Machine Operational Blasting Hours: 1870 hrs.**

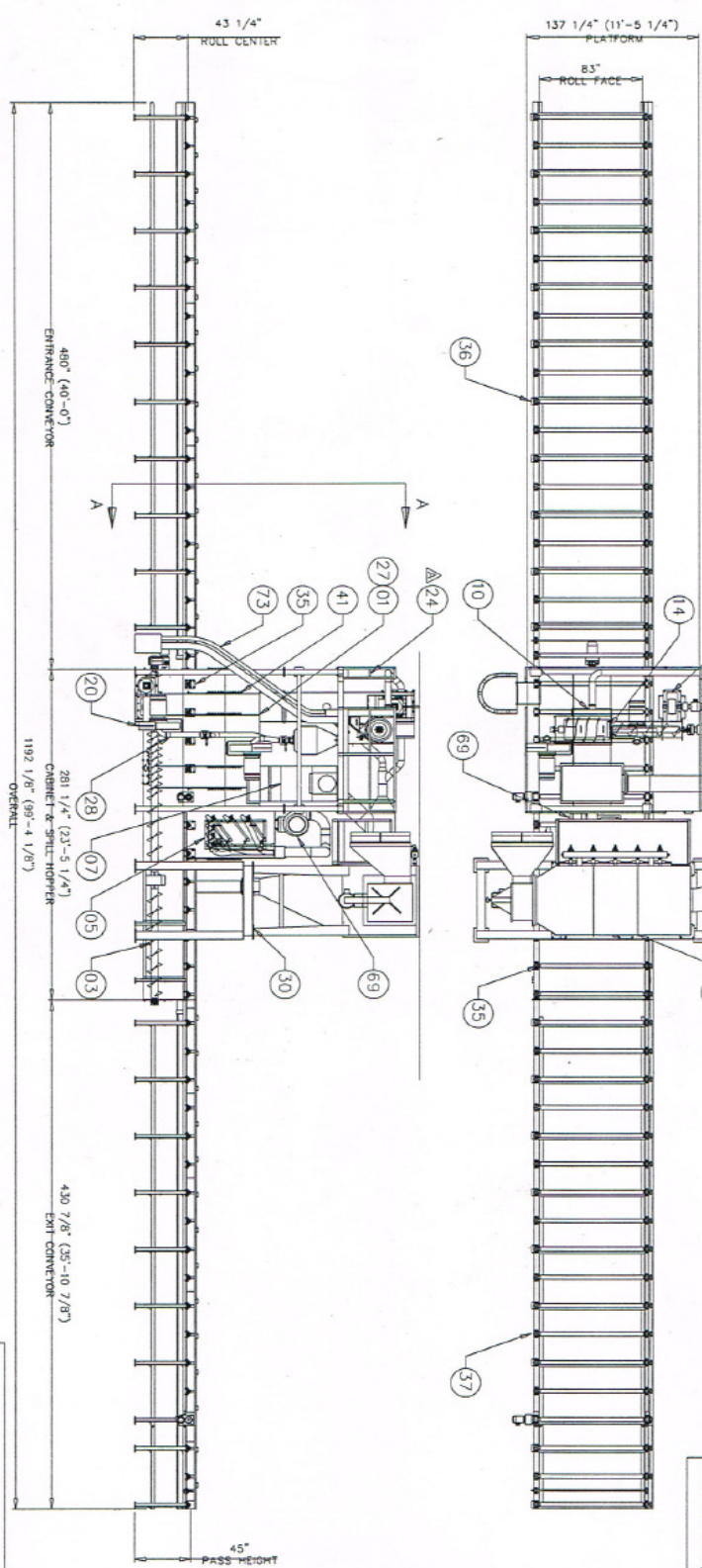
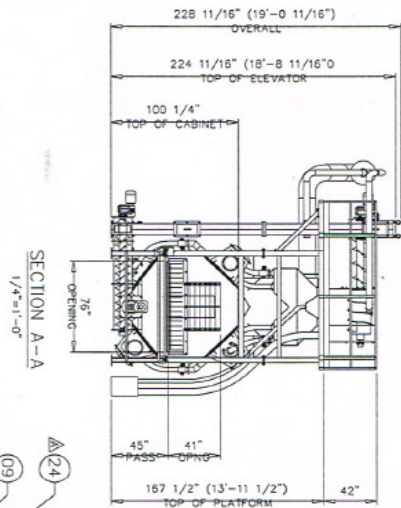
Notes:

Freight, Installation, Commissioning & Start-up: Can be provided at extra cost. Not included in above pricing.

Machine is presently in production in our Peen & Clean Facility in Hamilton, Ontario.







ITEM	QTY	PART NO.	DESC	MT
1	1	C206254	CABINET ASSEMBLY	6632
2	1	C206253	BLAST WHEEL ASSEMBLY	1230
3	1	C206252	SEPARATOR ASSEMBLY	1230
4	1	C206251	FEED WHEEL ASSEMBLY	1230
5	1	C206250	FEED WHEEL ASSEMBLY	1230
6	1	C206249	FEED WHEEL ASSEMBLY	1230
7	1	C206248	FEED WHEEL ASSEMBLY	1230
8	1	C206247	FEED WHEEL ASSEMBLY	1230
9	1	C206246	FEED WHEEL ASSEMBLY	1230
10	1	C206245	FEED WHEEL ASSEMBLY	1230
11	1	C206244	FEED WHEEL ASSEMBLY	1230
12	1	C206243	FEED WHEEL ASSEMBLY	1230
13	1	C206242	FEED WHEEL ASSEMBLY	1230
14	1	C206241	FEED WHEEL ASSEMBLY	1230
15	1	C206240	FEED WHEEL ASSEMBLY	1230
16	1	C206239	FEED WHEEL ASSEMBLY	1230
17	1	C206238	FEED WHEEL ASSEMBLY	1230
18	1	C206237	FEED WHEEL ASSEMBLY	1230
19	1	C206236	FEED WHEEL ASSEMBLY	1230
20	1	C206235	FEED WHEEL ASSEMBLY	1230
21	1	C206234	FEED WHEEL ASSEMBLY	1230
22	1	C206233	FEED WHEEL ASSEMBLY	1230
23	1	C206232	FEED WHEEL ASSEMBLY	1230
24	1	C206231	FEED WHEEL ASSEMBLY	1230
25	1	C206230	FEED WHEEL ASSEMBLY	1230
26	1	C206229	FEED WHEEL ASSEMBLY	1230
27	1	C206228	FEED WHEEL ASSEMBLY	1230
28	1	C206227	FEED WHEEL ASSEMBLY	1230
29	1	C206226	FEED WHEEL ASSEMBLY	1230
30	1	C206225	FEED WHEEL ASSEMBLY	1230
31	1	C206224	FEED WHEEL ASSEMBLY	1230
32	1	C206223	FEED WHEEL ASSEMBLY	1230
33	1	C206222	FEED WHEEL ASSEMBLY	1230
34	1	C206221	FEED WHEEL ASSEMBLY	1230
35	1	C206220	FEED WHEEL ASSEMBLY	1230
36	1	C206219	FEED WHEEL ASSEMBLY	1230
37	1	C206218	FEED WHEEL ASSEMBLY	1230
38	1	C206217	FEED WHEEL ASSEMBLY	1230
39	1	C206216	FEED WHEEL ASSEMBLY	1230
40	1	C206215	FEED WHEEL ASSEMBLY	1230
41	1	C206214	FEED WHEEL ASSEMBLY	1230
42	1	C206213	FEED WHEEL ASSEMBLY	1230
43	1	C206212	FEED WHEEL ASSEMBLY	1230
44	1	C206211	FEED WHEEL ASSEMBLY	1230
45	1	C206210	FEED WHEEL ASSEMBLY	1230
46	1	C206209	FEED WHEEL ASSEMBLY	1230
47	1	C206208	FEED WHEEL ASSEMBLY	1230
48	1	C206207	FEED WHEEL ASSEMBLY	1230
49	1	C206206	FEED WHEEL ASSEMBLY	1230
50	1	C206205	FEED WHEEL ASSEMBLY	1230
51	1	C206204	FEED WHEEL ASSEMBLY	1230
52	1	C206203	FEED WHEEL ASSEMBLY	1230
53	1	C206202	FEED WHEEL ASSEMBLY	1230
54	1	C206201	FEED WHEEL ASSEMBLY	1230
55	1	C206200	FEED WHEEL ASSEMBLY	1230
56	1	C206199	FEED WHEEL ASSEMBLY	1230
57	1	C206198	FEED WHEEL ASSEMBLY	1230
58	1	C206197	FEED WHEEL ASSEMBLY	1230
59	1	C206196	FEED WHEEL ASSEMBLY	1230
60	1	C206195	FEED WHEEL ASSEMBLY	1230
61	1	C206194	FEED WHEEL ASSEMBLY	1230
62	1	C206193	FEED WHEEL ASSEMBLY	1230
63	1	C206192	FEED WHEEL ASSEMBLY	1230
64	1	C206191	FEED WHEEL ASSEMBLY	1230
65	1	C206190	FEED WHEEL ASSEMBLY	1230
66	1	C206189	FEED WHEEL ASSEMBLY	1230
67	1	C206188	FEED WHEEL ASSEMBLY	1230
68	1	C206187	FEED WHEEL ASSEMBLY	1230
69	1	C206186	FEED WHEEL ASSEMBLY	1230
70	1	C206185	FEED WHEEL ASSEMBLY	1230
71	1	C206184	FEED WHEEL ASSEMBLY	1230
72	1	C206183	FEED WHEEL ASSEMBLY	1230
73	1	C206182	FEED WHEEL ASSEMBLY	1230

WHEELABRATOR

CAUTION: ROLLERS ARE SHOWN IN THE PROPERTY OF WHEELABRATOR

575/3/80 VOLS

REV

DATE

DESCRIPTION

BY

CHK

1

12/15/2000

WHEELABRATOR

AT

AT

2

12/15/2000

WHEELABRATOR

AT

AT

3

12/15/2000

WHEELABRATOR

AT

AT

4

12/15/2000

WHEELABRATOR

AT

AT

5

12/15/2000

WHEELABRATOR

AT

AT

6

12/15/2000

WHEELABRATOR

AT

AT

7

12/15/2000

WHEELABRATOR

AT

AT

8

12/15/2000

WHEELABRATOR

AT

AT

9

12/15/2000

WHEELABRATOR

AT

AT

10

12/15/2000

WHEELABRATOR

AT

AT

11

12/15/2000

WHEELABRATOR

AT

AT

12

12/15/2000

WHEELABRATOR

AT

AT

13

12/15/2000

WHEELABRATOR

AT

AT

14

12/15/2000

WHEELABRATOR

AT

AT

15

12/15/2000

WHEELABRATOR

AT

AT

16

12/15/2000

WHEELABRATOR

AT

AT

17

12/15/2000

WHEELABRATOR

AT

AT

18

12/15/2000

WHEELABRATOR

AT

AT

19

12/15/2000

WHEELABRATOR

AT

AT

20

12/15/2000

WHEELABRATOR

AT

AT

21

12/15/2000

WHEELABRATOR

AT

AT

22

12/15/2000

WHEELABRATOR

AT

AT

23

12/15/2000

WHEELABRATOR

AT

AT

24

12/15/2000

WHEELABRATOR

AT

AT

25

12/15/2000

WHEELABRATOR

AT

AT

26

12/15/2000

WHEELABRATOR

AT

AT

27

12/15/2000

WHEELABRATOR

AT

AT

28

12/15/2000

WHEELABRATOR

AT

AT

29

12/15/2000

WHEELABRATOR

AT

AT

30

12/15/2000

WHEELABRATOR

AT

AT

31

12/15/2000

WHEELABRATOR

AT

AT

32

12/15/2000

WHEELABRATOR

AT

AT

33

12/15/2000

WHEELABRATOR

AT

AT

34

12/15/2000

WHEELABRATOR

AT

AT

35

12/15/2000

WHEELABRATOR

AT

AT

36

12/15/2000

WHEELABRATOR

AT

AT

37

12/15/2000

WHEELABRATOR

AT

AT

38

12/15/2000

WHEELABRATOR

AT

AT

39

12/15/2000

WHEELABRATOR

AT

AT

40

12/15/2000

WHEELABRATOR

AT

AT

41

12/15/2000

WHEELABRATOR

AT

AT

42

12/15/2000

WHEELABRATOR

AT

AT

43

12/15/2000

WHEELABRATOR

AT

AT

44

12/15/2000

WHEELABRATOR

AT

AT

45

12/15/2000

WHEELABRATOR

AT

AT

46

12/15/2000

WHEELABRATOR

AT

AT

47

12/15/2000

WHEELABRATOR

AT

AT

48

12/15/2000

WHEELABRATOR

AT

AT

49

12/15/2000

WHEELABRATOR

AT

AT

50

12/15/2000

WHEELABRATOR

AT

AT

51

12/15/2000

WHEELABRATOR

AT

AT

52

12/15/2000

WHEELABRATOR

AT

AT

53

12/15/2000

WHEELABRATOR

AT

AT

54

12/15/2000

WHEELABRATOR

AT

AT

55

12/15/2000

WHEELABRATOR

AT

AT

56

12/15/2000

WHEELABRATOR

AT

AT

57

12/15/2000

WHEELABRATOR

AT

AT

58

12/15/2000

WHEELABRATOR

AT

AT

59

12/15/2000

WHEELABRATOR

AT

AT

60

12/15/2000

WHEELABRATOR

AT

AT

61

12/15/2000

WHEELABRATOR

AT

AT

62

12/15/2000

WHEELABRATOR

AT

AT

63

12/15/2000

WHEELABRATOR

AT

AT

64

12/15/2000

WHEELABRATOR

AT

AT

65

12/15/2000

WHEELABRATOR

AT

AT

66

12/15/2000

WHEELABRATOR

AT

AT

67

12/15/2000

WHEELABRATOR

AT

AT

68

12/15/2000

WHEELABRATOR

AT

AT

69

12/15/2000

WHEELABRATOR

AT

AT

70

12/15/2000

WHEELABRATOR

AT

AT

71

12/15/2000

WHEELABRATOR

AT

AT

72

12/15/2000

WHEELABRATOR

AT

AT

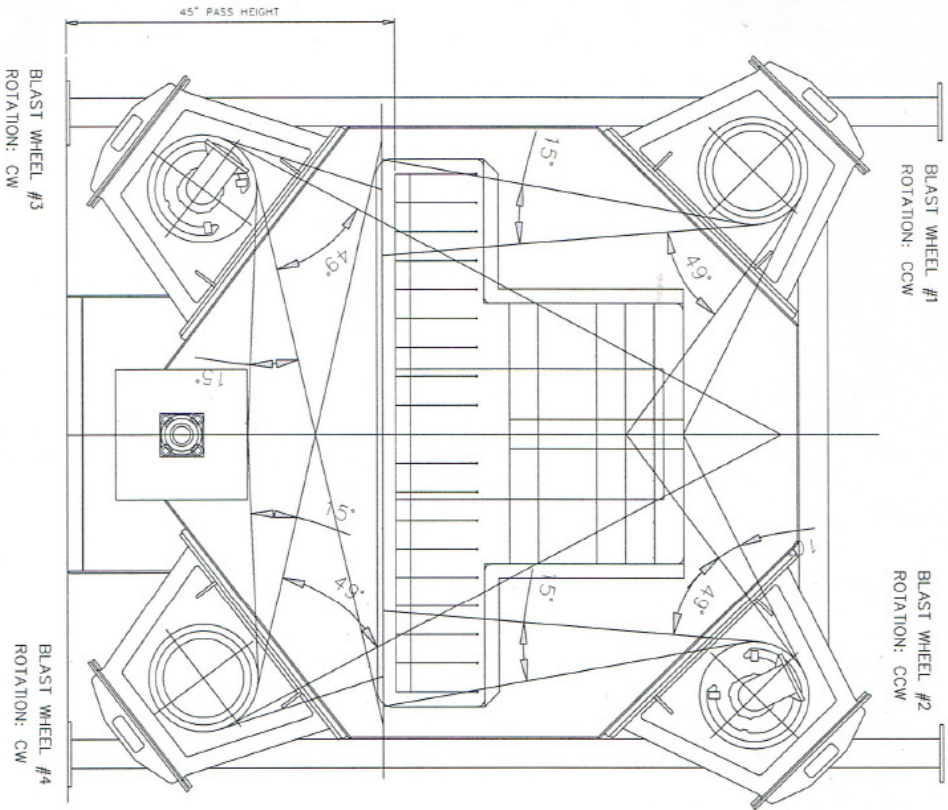
73

12/15/2000

WHEELABRATOR

AT

AT



VIEW AT ENTRANCE END
NOTE: ROTATION SHOWN @ FEED SPOUT SIDE

4-WHEEL PLATE & STRUCTURAL APPLICATION

CLEAN AND DESCALE PLATE AND STRUCTURAL MEMBERS
PLATE: NO BIGGER THAN 3/16" THK X 72" WIDE
STRUCTURAL: NO BIGGER THAN 1 1/2" WIDE X 36" HIGH
PARTS SHORTER THAN 6'-0" WILL NEED TO BE PROCESSED IN A BASKET
NOTE: ALL PARTS MUST BE DRY AND FREE OF OIL AND GREASE

SPECIFICATIONS OF COMPONENTS

AUTOBLAST WHEELS

TOTAL QTY = 4
HP EACH = 20 HP
WHEEL DIA. = 15"
THROWING CAP. = 350 LB./MIN.
TOTAL CAP. = 1400 LB./MIN.

9" X 25" ELEVATOR

TOTAL QTY = 1
HP EACH = 2 HP
BUCKET SPACING = 6"
TOTAL CAPACITY = 2208 LB./MIN @ 75% OF W.L.
MAXIMUM CAPACITY = 2942 LB./MIN @ W.L.
SPEED = 87 RPM

RECLAIM SCREW CONVEYOR

TOTAL QTY = 1
HP EACH = 5 HP
SCREW DIA. = 12" (SINGLE/DOUBLE FLIGHT)
CARRYING CAPACITY = 2714 LB./MIN.
SPEED = 30RPM @ 50% LOADING

30" SEPARATOR

TOTAL QTY = 1
INCHES OF LIP = 30"
WHEEL LOAD @ 1400 LB./MIN = 47 LBS./IN OF LIP
ELEVATOR LOAD (75% W.L.) 2208# = 74 LBS./IN OF LIP
ELEVATOR LOAD (100% W.L.) 2942# = 98 LBS./IN OF LIP

CROSS SCREW CONVEYOR

TOTAL QTY = 1
HP EACH = 3 HP
SCREW DIA. = 12" (DOUBLE FLIGHT)
CARRYING CAPACITY = 2714 LB./MIN.
SPEED = 32RPM @ 50% LOADING

UPPER SCREW CONVEYOR

TOTAL QTY = 1
HP EACH = 3 HP
SCREW DIA. = 12" (SINGLE FLT)/20" (DRUM FLT)
CARRYING CAPACITY = 3732 LB./MIN
SPEED = 44RPM @ 50% LOADING

BLOW-OFF

TOTAL QTY = 1
BLOWER = 15 HP @ 2300 CFM/8" OUTLET
SILENCER = 8" C/W INLET GUARD
AIR CANNONS = 4" INPVT (125 INSERT)

ROLL CONVEYOR

TOTAL QTY = 2
HP EACH = 1 HP
SPEED = 12 RPM
LINE SPEED = 6 - 8 FT./MIN

DUST COLLECTOR

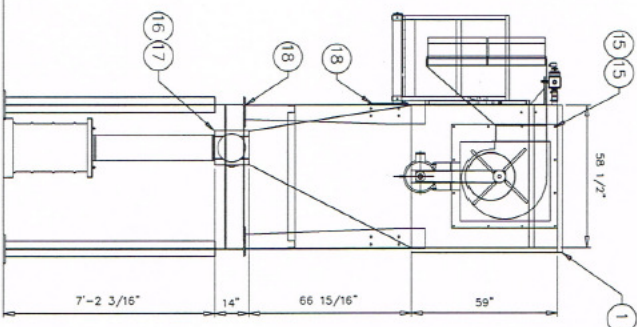
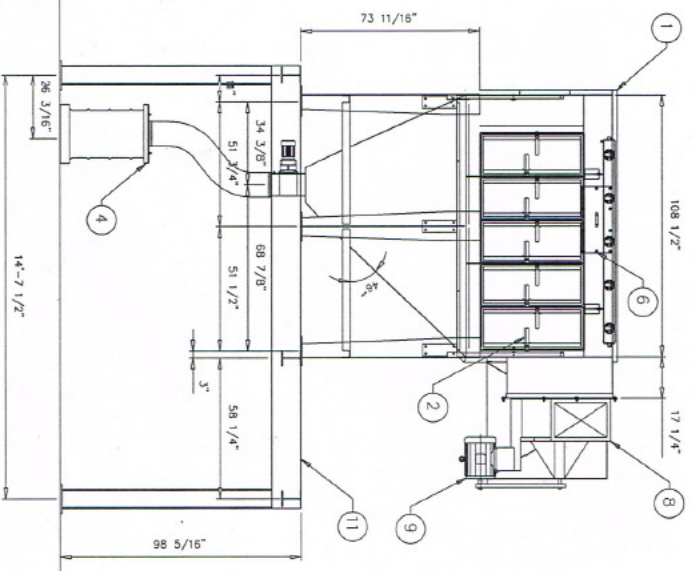
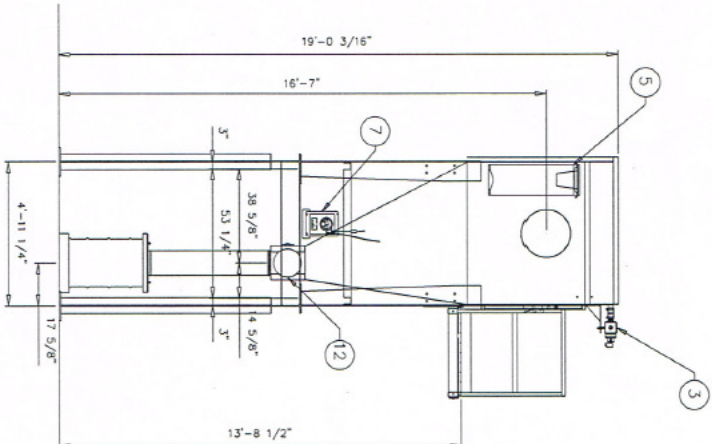
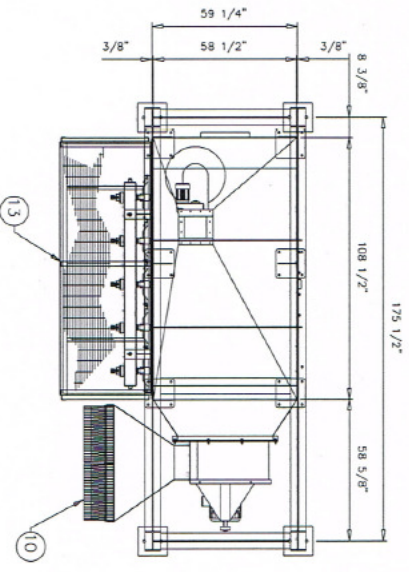
TOTAL QTY = 1
HP EACH = 15 HP
CFM = 7000 CFM
STATIC PRESSURE = 8" @ SPWG
NO. OF CARTRIDGE = 20

WHEELABRATOR

PNC207374

REV	DATE	DESCRIPTION	BY
1	11 AUG 2005	DESIGN CURRINA & BLAST FURN	JOB

DESIGN CURRINA & BLAST FURN	DATE 11 AUG 2005	DESIGN NO. 85153	REV 0
JOB #100	SCALE 1/2" = 1'	AT-85153	0



ITEM	QTY	PART NO.	DESC	QTY	REV
1	1	C207913	WHEELABRATOR	1	0
2	5	A1-85449	SPIN-4020 HOUSING WELDMENT	430	
3	1	A1-85449	SPIN-4020 DUST COLLECTOR DOOR	225	
4	1	A1-85449	DUST COLLECTOR (1) INLET WHEELER	150	
5	1	A1-85449	DUST COLLECTOR DISCHARGE	30	
6	1	A1-85449	SPIN-4020 DUST COLLECTOR WELDMENT	12	
7	1	A1-85449	PHOTOGRAPHIC DANGER & WARNING SIGN	4	
8	1	A1-85449	SPIN-4020 DUST COLLECTOR WELDMENT	12	
9	1	A1-85449	SPIN-4020 DUST COLLECTOR WELDMENT	12	
10	1	A1-85449	SPIN-4020 DUST COLLECTOR WELDMENT	12	
11	1	A1-85449	SPIN-4020 DUST COLLECTOR WELDMENT	12	
12	1	A1-85449	SPIN-4020 DUST COLLECTOR WELDMENT	12	
13	1	A1-85449	SPIN-4020 DUST COLLECTOR WELDMENT	12	
14	32	A1-85449	1/2" NC X 1 1/2" LG HEX HD BOLT C/W FW	320	
15	32	A1-85449	1/2" NC HEX CAPNUT C/W FW 2 LW	320	
16	32	A1-85449	3/8" NC X 1 1/4" LG HEX HD BOLT C/W FW	320	
17	32	A1-85449	3/8" NC HEX CAPNUT C/W FW & LW	320	
18	36	A1-85449	3/4" NC X 2 1/2" LG A-325 BOLT ASS'Y	360	

REV	DATE	DESCRIPTION	BY
0	20 JUL 2005	WHEELABRATOR	JPM

GROUP	SCALE	DATE	REV	WEIGHT
30	1/4"=1'-0"	20 JUL 2005	0	7334

WHEELABRATOR

PN C207913

THIS DRAWING AND THE DESIGN SHOWN THEREIN IS THE PROPERTY OF WHEELABRATOR AND USE OR COPIES HEREOF WITHOUT WRITTEN CONSENT IS PROHIBITED.